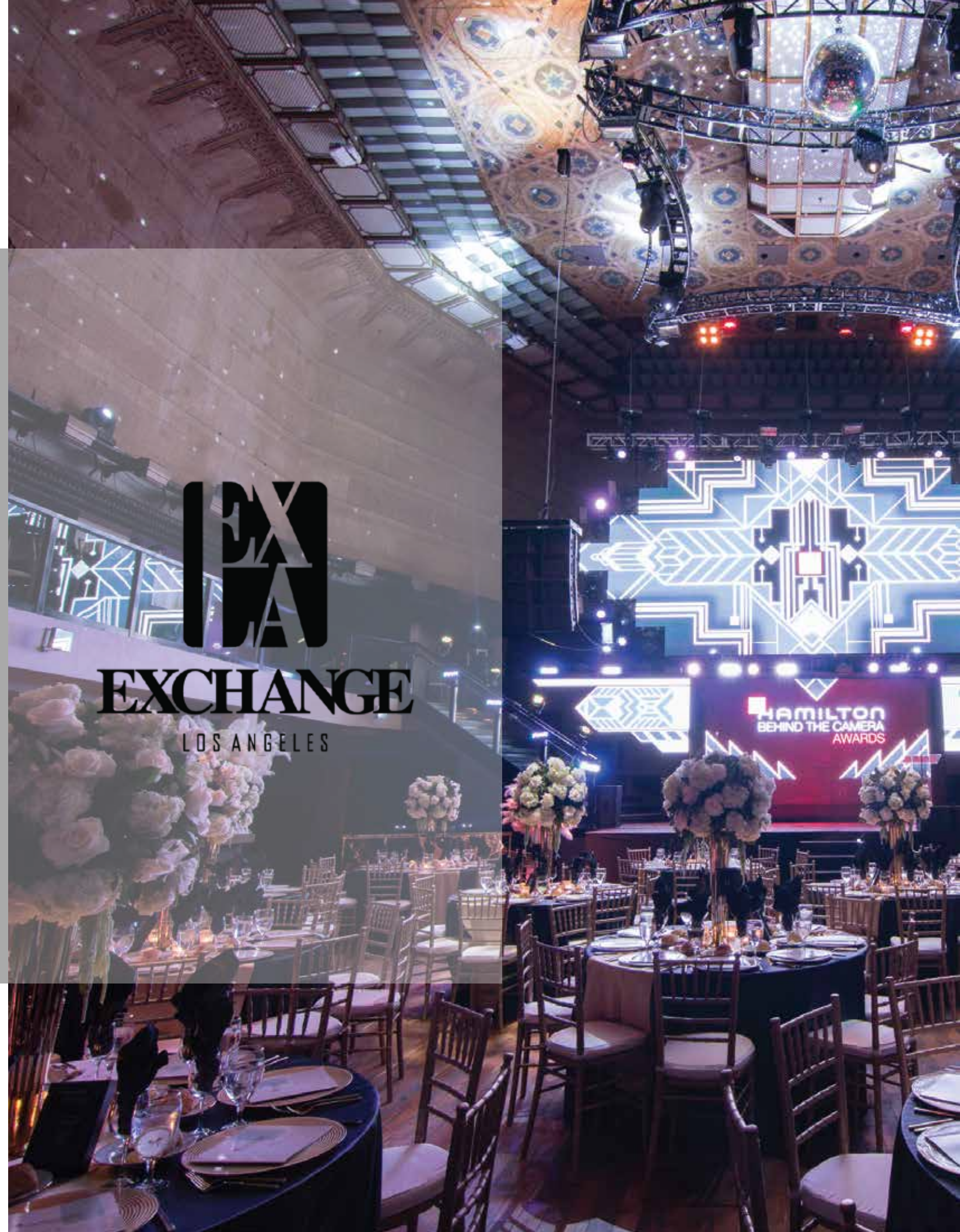


SPECIAL EVENTS

618 S. Spring Street
Los Angeles, CA 90014

Angela@exchangela.com
Danielle@exchangela.com
Rosie@exchangela.com

213.627.8070

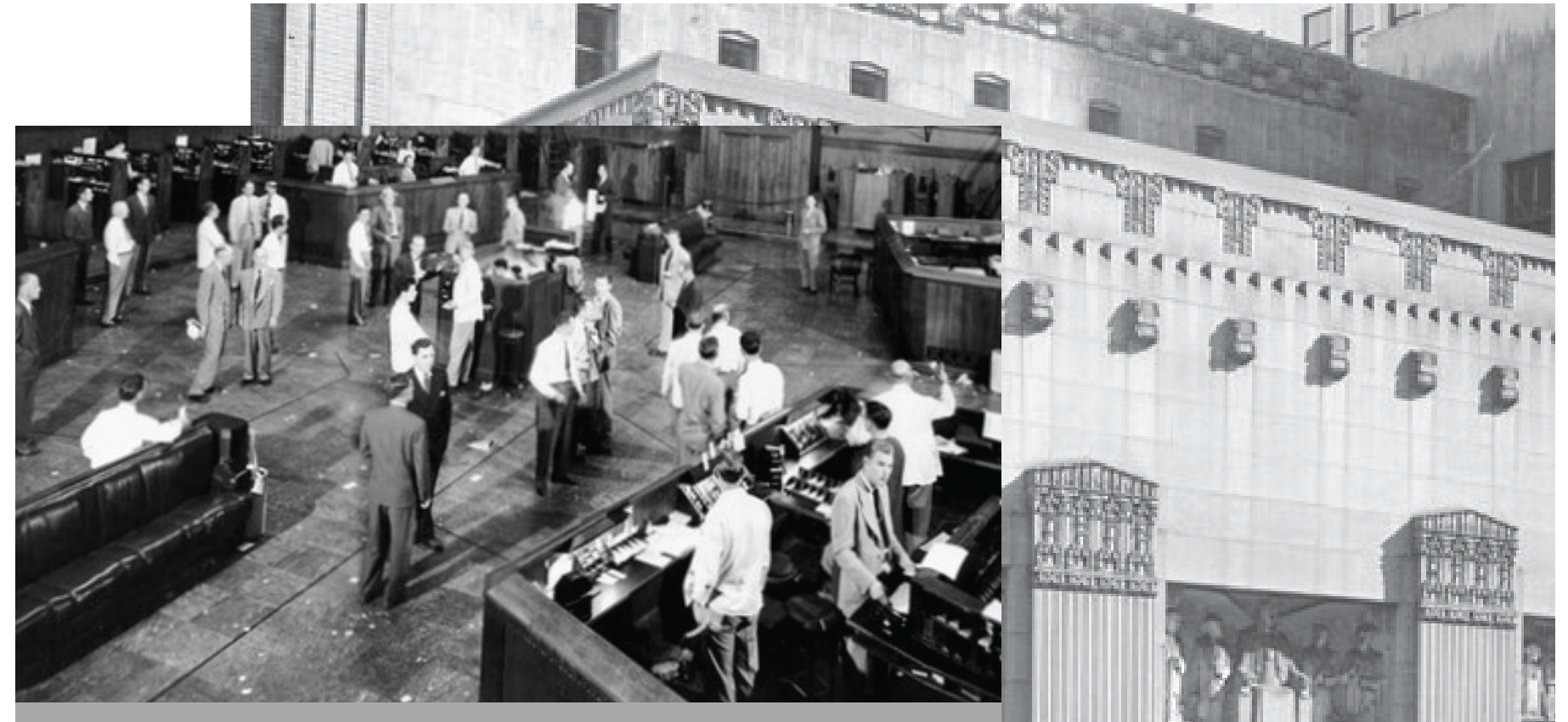
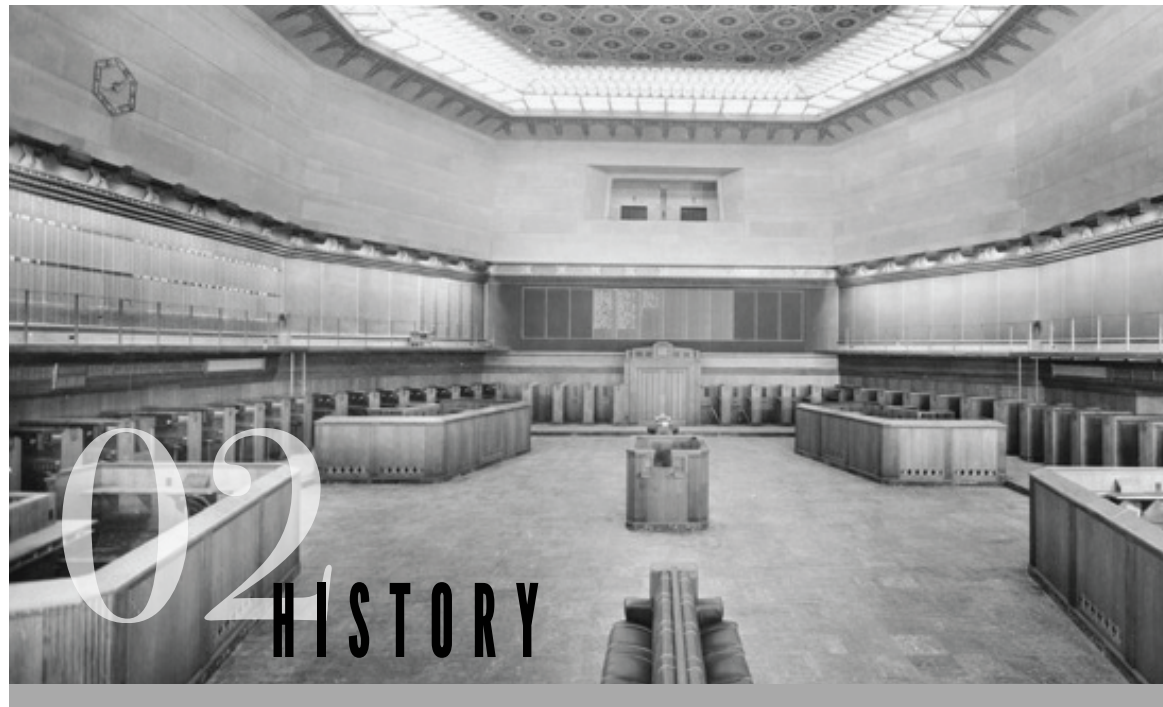




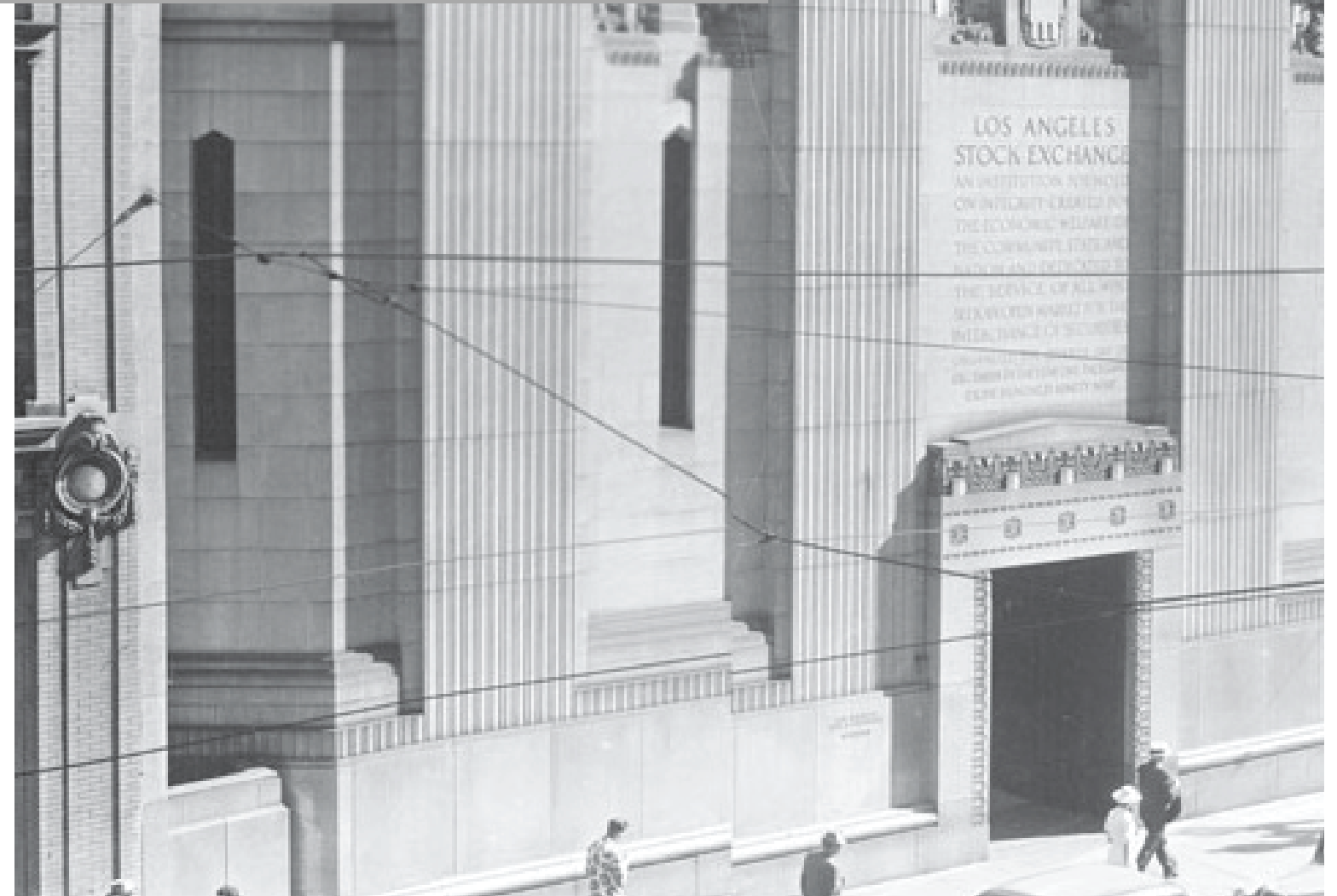
01 INTRODUCTION

Formerly the Los Angeles Stock Exchange, our venue pays homage to its rich and opulent Art Deco past. After nearly two years of delicate renovations and retrofitting, Exchange LA opened as a vibrant venue that not only functions as a nightclub, but also as an event space for award shows, premiere parties, corporate events, fashion shows, film shoots and charity galas.

This historic gem from the 1930s is reimagined as a sprawling four story venue that accommodates up to 1,500 guests. Featuring multiple rooms, seven full service bars, state of the art lighting, sound, and a colossal LED screen display, our ornate venue sits in the heart of Downtown Los Angeles' booming art and entertainment scene.



The Pacific Coast Stock Exchange was designed to be staggering and imposing, with a 53-foot granite façade and the area’s largest bronze doors. The Moderne style building served as the headquarters of the Los Angeles Stock Exchange and the Pacific Stock Exchange from 1931 to 1986. The trading floor was 64 booths and a mezzanine under a spectacular 40-foot ceiling. The building was designated a Cultural Monument in 1979 and its exterior is protected by the Los Angeles Conservancy.



03

THE TRADING FLOOR

The Trading Floor is our main event space featuring our renowned LED screens, a 360 degree/surrounding/full/halo mezzanine and spectacular architecture.

Capacity: 1050
Main Floor: 750
Mezzanine: 300



04

SKYLOFT AND GALLERY

The Skyloft and Gallery function as VIP Rooms on the fourth and first floor, respectively.

Capacity: 50 and 300





05

FOYER AND ROCKEFELLER ROOM

The Foyer and Rockefeller Room are two spaces adjacent to our trading floor.

Combined Capacity: 100



06

PRODUCTION SPECS

Our Main floor features a 30ft x 40ft LED screen with over 1.5 million pixels for customizable video projection and 50 Intelligent moving head lights with more than 90 LED fixtures. Our Main PA is by Funktion One Sound, a ground stack quadraphonic setup featuring 8-EV06 Tops and 8-F221 Subs. Additional sound reinforcement supplied by 8 JBL Vertec 4888's flown on motors for adjustable trim. Our on-site technical production team is present to assist you in the planning stages as well as on event day.



PA SYSTEM

8 Funktion One	Evo6 top cabinents (installed May 2016)
8 Funktion One	F221 dual 21” subwoofers
6 MC2	E90 Amplifiers
2 BSS	London Blu 100
1 Midas	M32r W/ wireless network and I-pad Interface

MAIN STAGE DJ MONITORS

4 JBL	VRX932LAP tops (2 per side)
2 JBL	SRX 728S dual 18” subwoofers (1 per side)
3 Crest	9200 amplifiers
1 Klark-Technic	31-Band Stereo Equalizer
1 DBX	Drive Back

DJ BACKLINE

Must request Qty	Pioneer	NXS2 CDJs & Mixers
Must request Qty	Allen & Heath	Xone 92
Must request Qty	Technic	1200 Turntable
Must request Qty	Pioneer	DJM2000
Must request Qty	Pioneer	EFX1000 & RMX1000
Must request Qty	Netgear	8-port gigabit ethernet hub
Must request Qty	Shure	PGX Wireless microphones

LIGHT CONTROL

Fixture plot and patch sheet available on request
1 GrandMA Series 2 Full Size

STAGE LIGHTS

26 Max 5R moving heads
20 LED Color Blast
24 LED Pars
18 Atomic Strobes
2 Audeience Blinder

MAIN STAGE DJ MONITORS

12 Max 5R Beam
32 Wall wash LED color blasts

SPECIAL EFFECTS

2 Liquid Nitrogen Jets (SFX Tech req’d)
4 In-house Co2 jects (SFX Tech req’d)
1 House confetti cannon with gas and confetti
2 Hazers with water-based fluid and 20” fans

VIDEO SYSTEM

CONTROL

Pixel map and mask available on request.

Resolume Arena 5

MAIN WALL

26' H x 40' W 6pt Oracle LED Wall

6' H x 12' W 6pt Oracle LED Wall wings

8' H x 10' W 5pt Oracle LED Wall stage backdrop

SIDE WALL

8 Epson Projectors 960 x 540px (4 per side)

Total pixels = 3840 x 540 @ 30fps per side

More details at: <http://exchangela.com/video-system>

ADDITIONAL POWER

1 50 Amp 2-phase distro connect in 1st Floor Gallery

1 50 Amp 2-phase distro connect on 2nd Floor Main Stage 1

100 Amp 3-phase cam-lock distro on 3rd Floor Mezzanine

LOADING

631 S Harlem Pl 90014

Back alley elephant doors for loading.

Elevator is next to loading doors.

Elephant door: W 62" (5' 2") H 84" (7')

Elevator door: W 41-1/2" (3' 5.5") H 84" (7') Diag: 93 1/2" (7' 9.5")

NETWORKING

Basic 5 MBPS up/down wi-fi

More bandwidth available at additional cost

COMMUNICATION

Security walkies

No in-house Clear Com

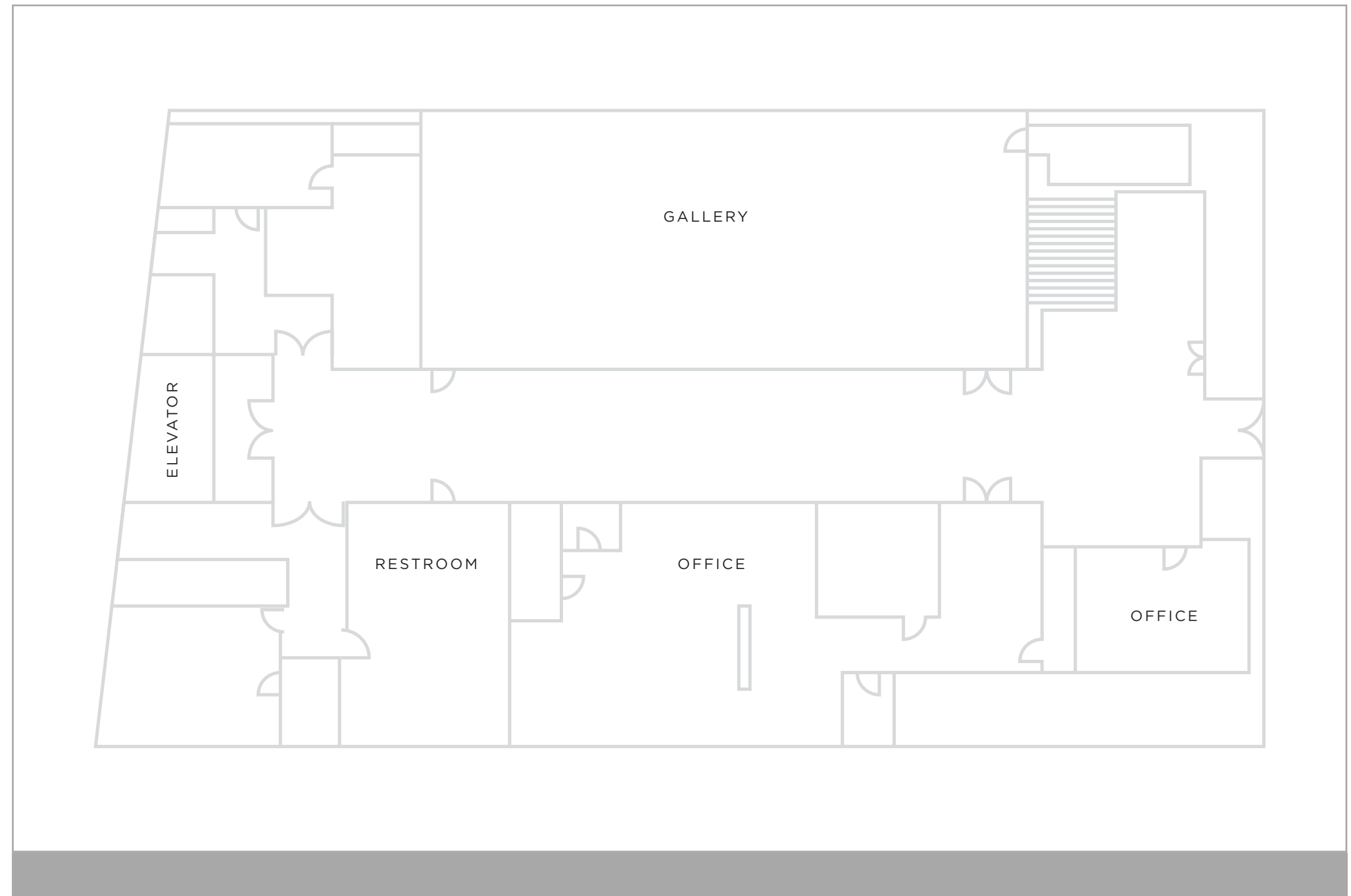
PARKING

Joe's Auto Parks 545 S Main St 90013

545 S Main St, Los Angeles, CA 90013

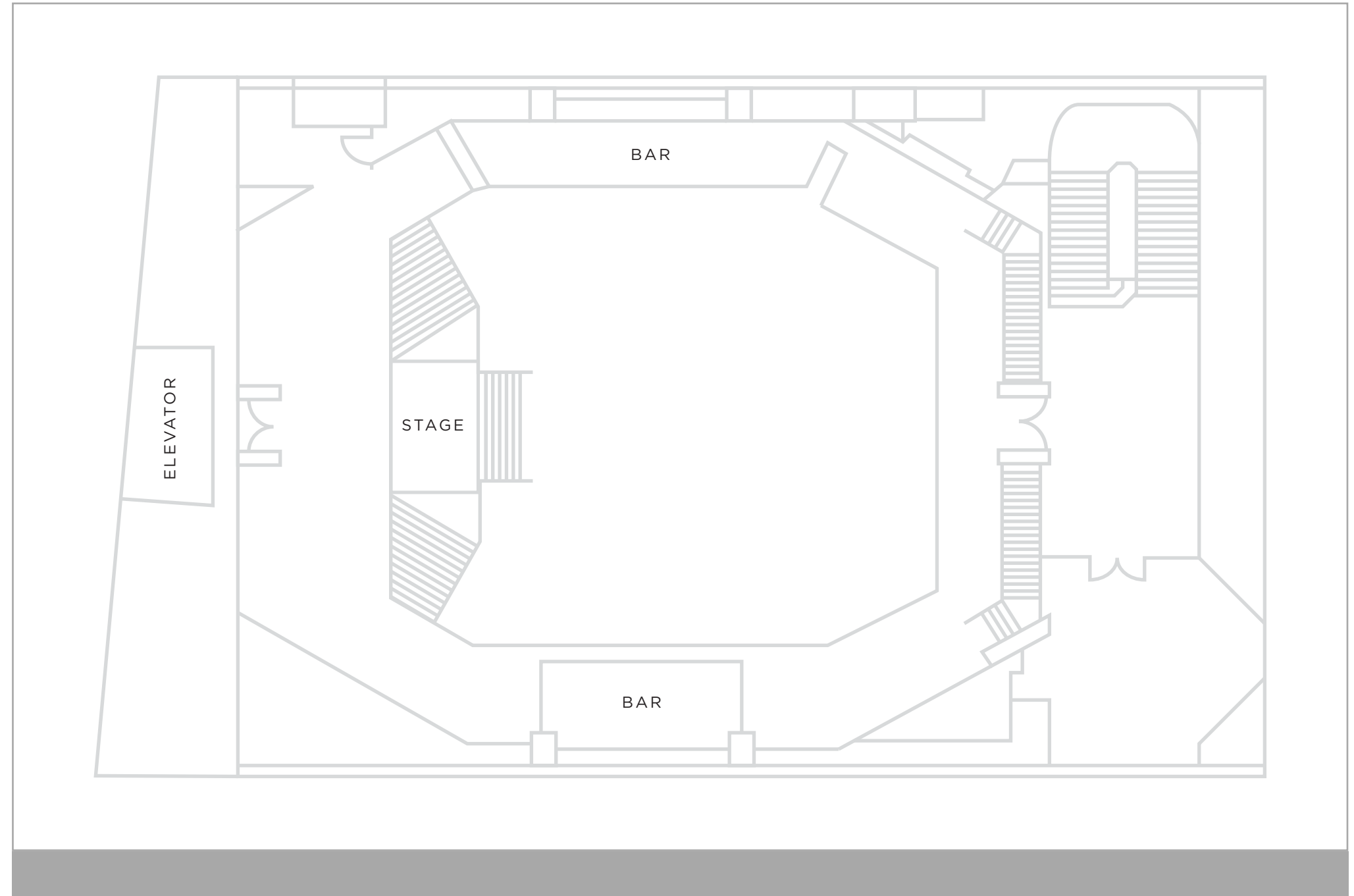
Many other lot options in the area.

07
FIRST
FLOOR

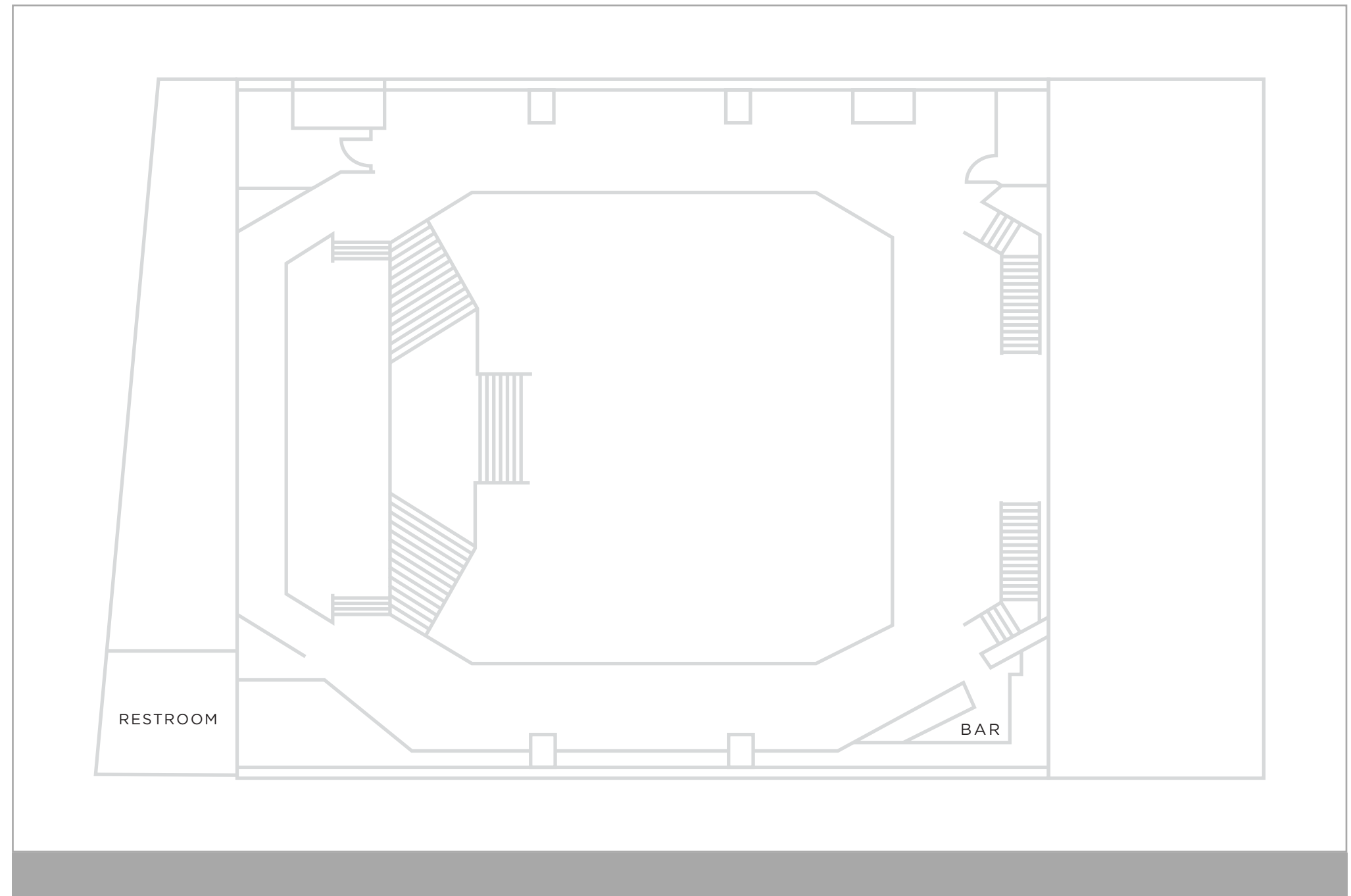


07

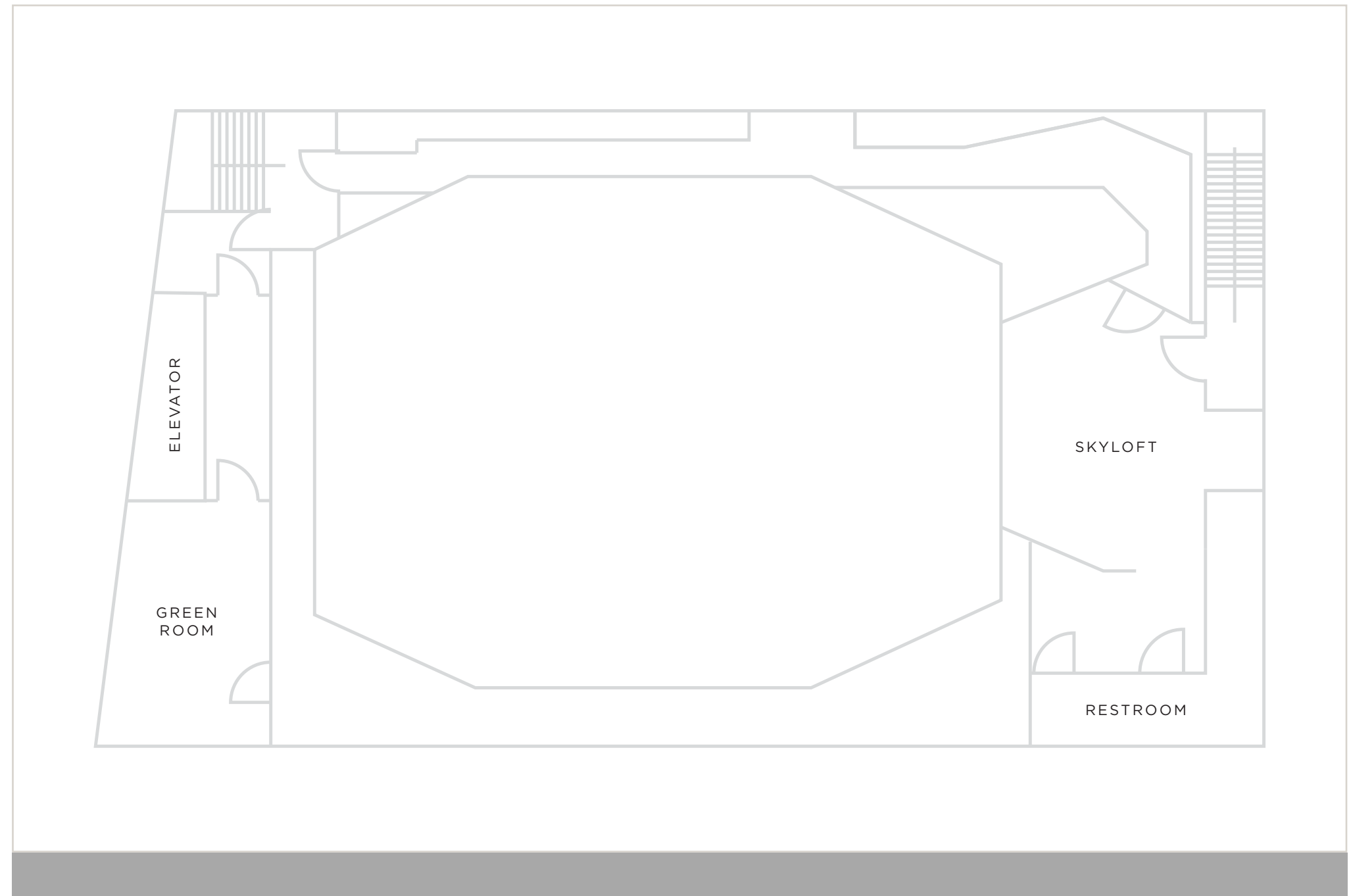
**SECOND
FLOOR**



07 THIRD FLOOR



07 FOURTH FLOOR





SPECIAL EVENTS

618 S. Spring Street
Los Angeles, CA 90014

Angela@exchangela.com
Danielle@exchangela.com
Rosie@exchangela.com

213.627.8070